

Installation Manual

MG ZS 5DR
MG-ZS-5-A



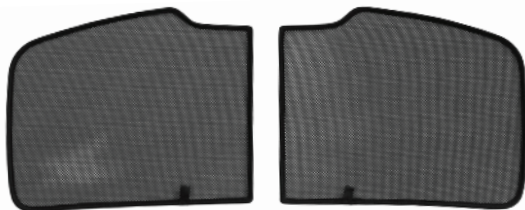
Shades



Side Shades



Port Shades



Tailgate Shades

Fixing Clips



CL-M12 x 4



CL-P01 x 4



CL-M13 x 4



CL-M14 x 1



CL-W01 x 1

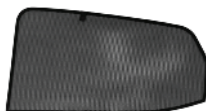


Installation

MG ZS 5DR

MG-ZS-5-A

Components Needed



Side Shades



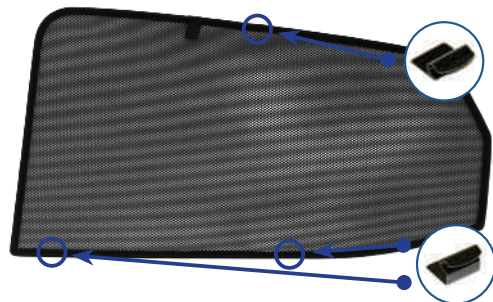
CL-M12 x 2



CL-M13 x 4

Side Shade Installation

STEP 1



Position clips onto the shade as shown ensuring the C-shape portion of the clip fits onto the frame securely. Ensure the woven label of the shade is facing you.

STEP 2



Place the bottom horizontal edge of the shade into position with the extension of the clips fitting between the plastic trim and rubber window seal.

STEP 3



Ensure both clips along the bottom horizontal edge of the frame are positioned between the plastic trim and the rubber seal of the window.

STEP 4



Gently flex the top horizontal edge of the shade so the clip can move into position. Warning. Take care not to scratch the clip along the painted door frame. Position the extension of the clip between the metal frame and the rubber window seal.

Installation

MG ZS 5DR

MG-ZS-5-A



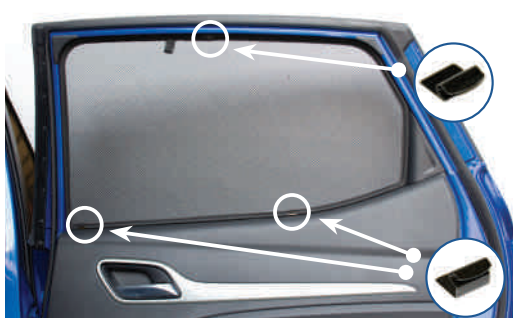
Side Shade Installation

STEP 5



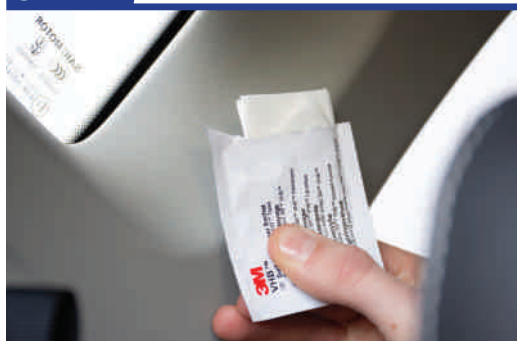
Using the woven label pull the shade upwards to ensure the clip is fully inserted into position.

STEP 6



The shade is now installed. Repeat on the opposite side window.

STEP 7



Take note of the clip positioning in step 10. Tear open the surface cleaner sachet and ensure the plastic trim where the clips are to be located is cleaned using the wipe provided.

STEP 8



Once the surface is clean and dry, remove the backing paper from the clips and fix into position. Press and hold each clip firmly in position for 30 seconds.

Installation

MG ZS 5DR
MG-ZS-5-A

Components Needed



Port Shades



CL-P01 x 4



CL-W01 x 1

Port Shade Installation

STEP 9



With the woven label facing you and positioned to the top, push the leading edge of the shade into position to fit into the clip.

STEP 10



Push the top edge of the shade into position so it clicks into the clip.

STEP 11



Adjust the shade into position so it covers the window aperture.

STEP 12



Repeat on the opposite side of the vehicle.

Installation

MG ZS 5DR
MG-ZS-5-A

Components Needed



Tailgate Shades



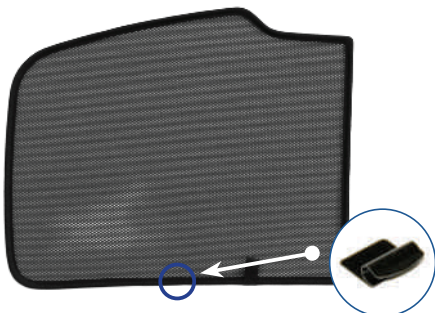
CL-M12 x 2



CL-M14 x 1

Tailgate Shade Installation

STEP 13



With the woven label facing you, attach 1 x CL-M12 clip to the centre of the horizontal edge of the frame adjacent to the woven label.

STEP 14



Offer the shade into position as shown, ensuring the frame is firmly pushed into the edges of the tailgate trim.

STEP 15



Flex the horizontal edge of the frame, using the woven label, allowing the extension of the clip to tuck behind the metal tailgate trim.

STEP 16



Pull down on the woven label to ensure the clip is firmly fixed behind the trim

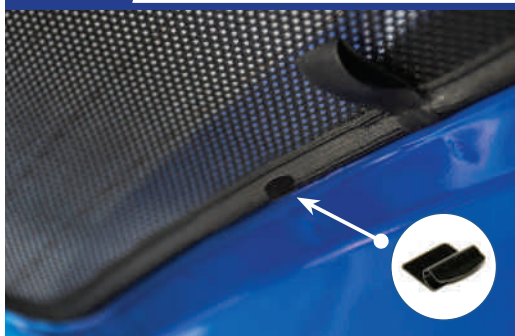
Installation

MG ZS 5DR
MG-ZS-5-A



Tailgate Shade Installation

STEP 17



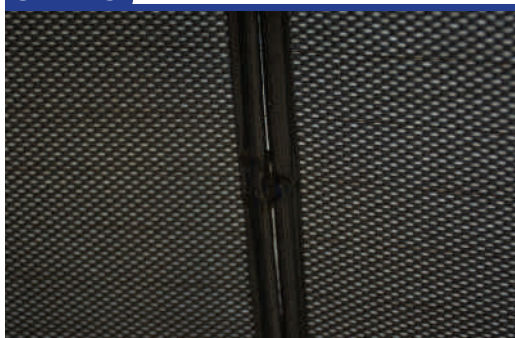
With the shade now installed, repeat the process for the second tailgate shade.

STEP 18



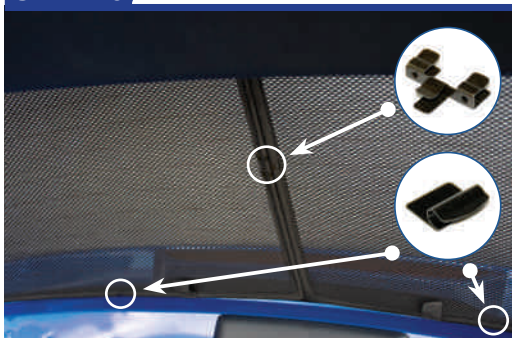
Gently part the two shades at the centre join and press the CL-M14 clip into position.

STEP 19



Firmly press the shade together so the clip holds the shades securely.

STEP 20



Your tailgate shades are now securely installed.