



**sparco**  
Kids

# CHILD CAR SEAT SK5000I

## INSTRUCTION MANUAL

GB

ES

FR

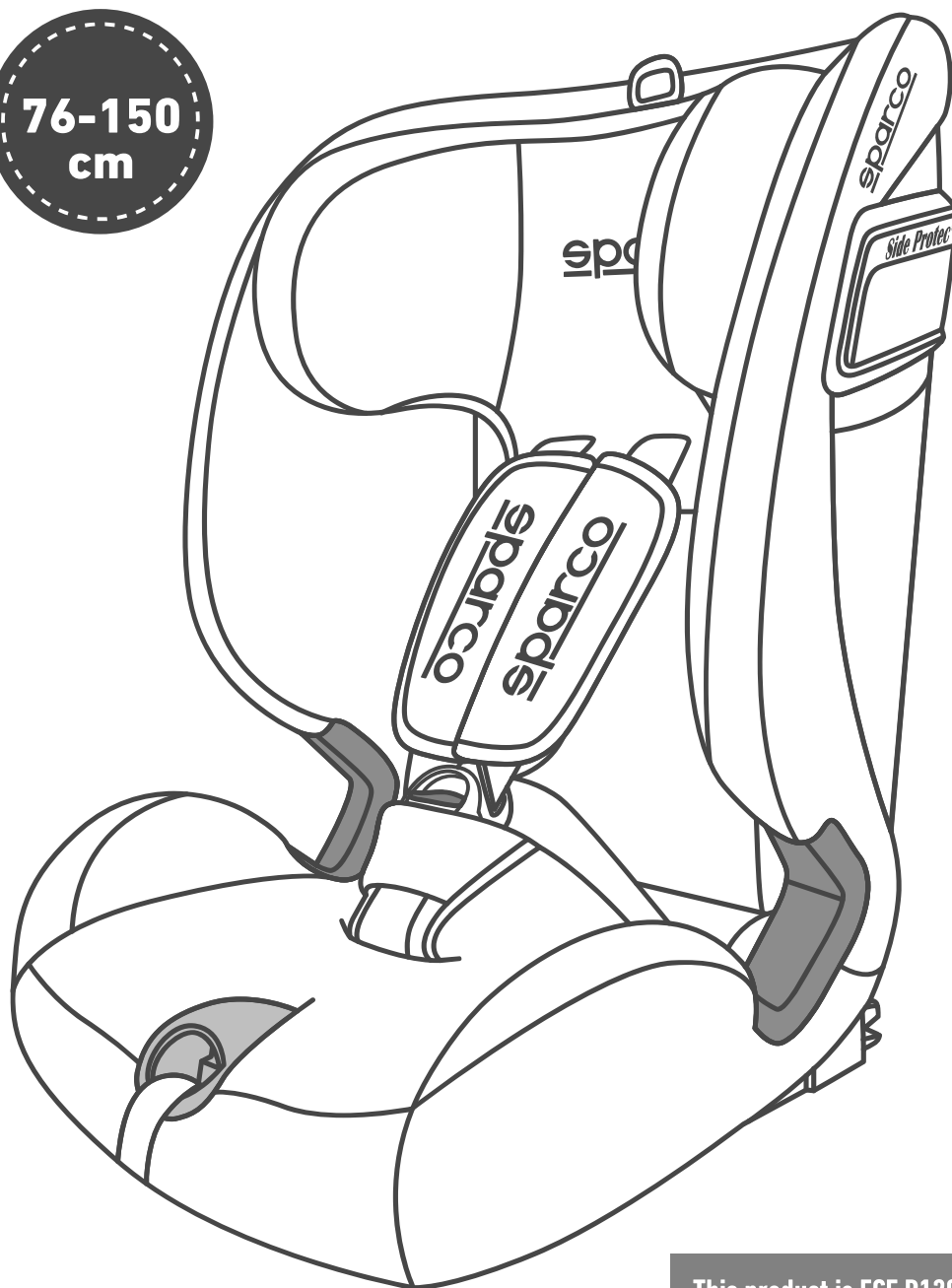
DE

IT

PT

NL

**76-150  
cm**



**ECE R129/03**

This product is ECE R129/03 certified. Product use is prohibited in the USA. Check your country's product compliance regulations prior to use.

# Instruction on the use of car seat for children

The pictures on this manual are for reference only



## WARNING

Please read the instructions before using the child seat. The instructions should be kept properly for future reference. A violation of the instructions may endanger the safety of children to varying degrees. Do not place child safety seats on front seat equipped with safety airbag, which may cause serious injury or even death to children. Do not use forward facing before the child's age exceed 15 months.

## NOTICE

**For i-Size category Enhanced Child Restraint Systems (76-105cm)**

This is an i-Size Enhanced Child Restraint System. It is approved according to UN Regulation No.129, for use in, i-Size compatible vehicle seating positions as indicated by vehicle manufacturers in the vehicle users' manual.

If in doubt, consult either the Enhanced Child Restraint System manufacturer or the retailer.

**For i-Size booster seat category Enhanced Child Restraint Systems (100-150cm)**

This is an i-Size booster seat Enhanced Child Restraint System. It is approved according to UN Regulation No.129, for use primarily in "i-Size seating positions" as indicated by vehicle manufacturers in the vehicle user's manual.

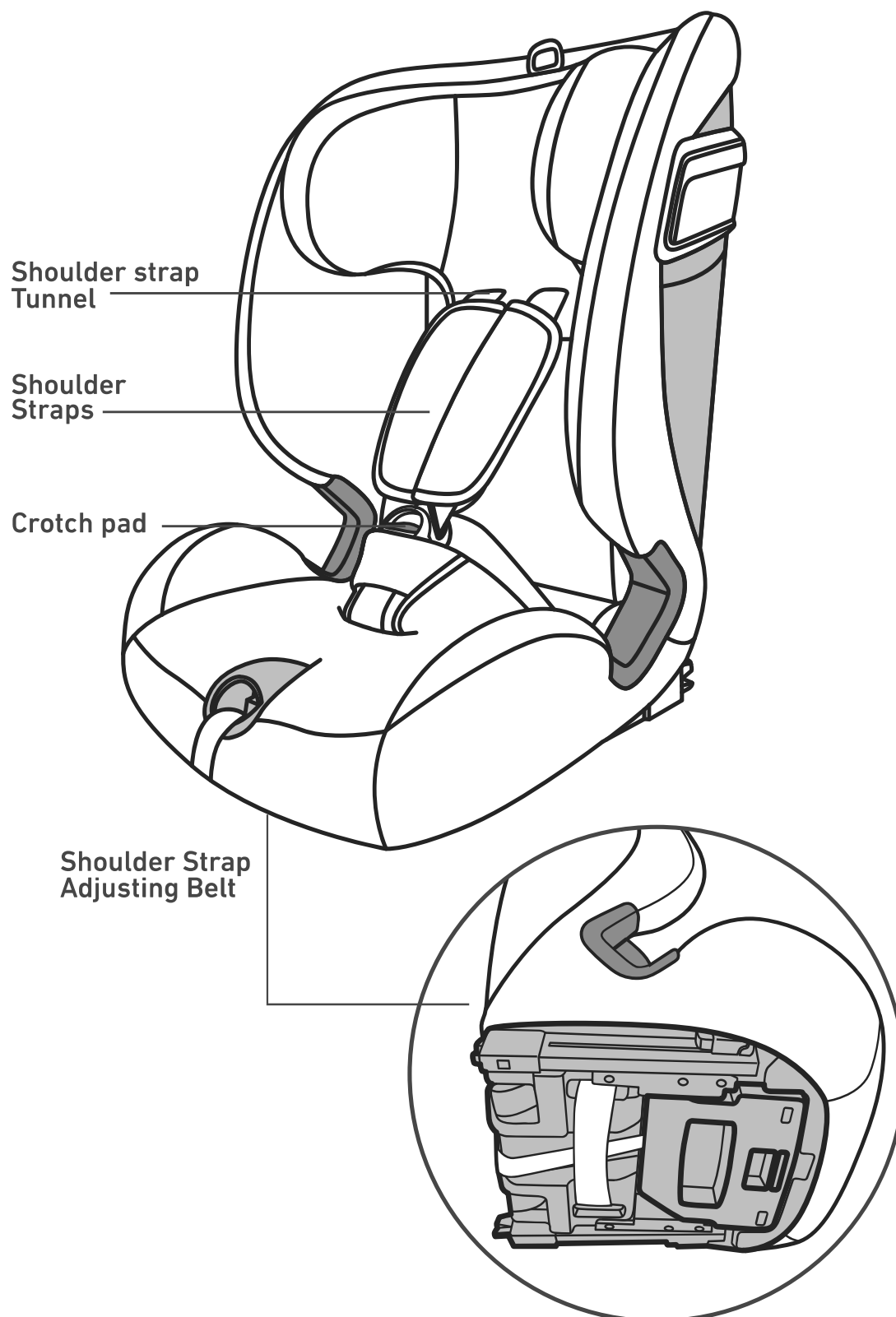
If in doubt, consult either the Enhanced Child Restraint System manufacturer or the retailer.

# CONTENTS

GB

1. Structure.....	4	ES
2. Features .....	6	FR
3. Safety Instructions .....	6	DE
4. Operations.....	8	IT
4.1 The Mounting Position.....	8	PT
4.2 Adjust The Headrest .....	8	NL
4.3 Check The Height Of The Shoulder Straps.....	9	
4.4 Buckle Operation.....	9	
4.5 Adjust The Length Of The Shoulder Straps .....	9	
4.6 Adjust The ISOFIX.....	10	
4.7 Install The Child Safety Seat.....	10	
5. Installation.....	11	
5.1 For Height 76-105cm with ISOFIX and Top Tether.....	11	
5.2 For Height 100-150cm.....	12	
5.3 Removal of the seat belt and hide the buckle.....	13	
6. Removal And Installation Of Fabric Cover.....	15	
7. Maintenance And Cleaning.....	16	
7.1 Routine Maintenance.....	16	
7.2 Laundry Information.....	16	

# STRUCTURE



# STRUCTURE

GB

ES

FR

DE

IT

PT

NL

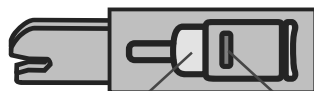
Headrest Adjusting Lever

Side protector

Top Tether

Belt Connector

ISOFIX Chunk



ISOFIX  
Release  
Button

ISOFIX  
Display  
Window

## FEATURES

1. The product named as the restraint system for the motor vehicle child occupant, motor vehicle child occupant use restraint system, commonly known as the automobile child safety seat. The product shape is a streamlined bionic design, beautiful and generous. The body strength is high, compact structure, stable. The cloth cover is made of flame retardant and environmentally friendly fashion fabric, wear-resistant, soft, antibacterial, and available in a variety of colors.
2. This product uses car's 3-Point Safety-Belts and ISOFIX installed in the car.
3. This product headrest can be adjusted in multiple gear.
4. This product is aimed at children height from 76cm to 150cm.

## SAFETY INSTRUCTIONS

For the safety of your child, please read the following instructions carefully.

Carelessness or mishandling will lead to many injuries which could be avoided.

1. This product is suitable for children height at 76-105cm, use ISOFIX forward installed in the car and top tether, and finally use the product's own 5-Point Harness-Belts to fix the child. It is strictly prohibited to carry more than one child, and overload usage is strictly prohibited. Note: All woven straps SHALL NOT be twisted.
2. This product is suitable for children height at 100-150cm, use ISOFIX and 3-Point Safety-Belts or car's 3-Point Safety-Belts only, forward installations to secure the child safety seat inside the car. It is strictly prohibited to carry more than one child, and overload usage is strictly prohibited. Note: All woven straps SHALL NOT be twisted.
3. Only suitable if the approved vehicles are fitted with 3-Point Safety-Belts, approved to UN/ECE Regulation No.16 or other equivalent standards.
4. For an ISOFIX Child Restraint System, the instructions for user shall be given to read the car manufacturer's handbook.

5. Each woven straps shall be fastened connecting the child safety seat to the vehicle. The straps of bound children shall be adjusted according to the child's body and suitable for the child's body size, noting that all straps shall not be twisted.

6. To prevent children removing from the safety seat, children shall always be tied with straps to ensure that the straps well restricts the pelvic part of the child and note that all straps shall not be twisted.

7. Child safety seat shall be replaced when it has suffered from a severe accident.

8. Do not modify this product by yourself, products without certified license and modified products are dangerous.

9. If the surface cover of the product is not a textile, it should be kept away from sunlight, otherwise the surface will burn children's skin. This product must be used with a fabric cover. The fabric covers of this product can not use other materials than those recommended by the manufacturer, which affect the overall performance of the product.

10. Do not leave child alone in the child safety seat unattended. This product is not designed for home use and is only suitable for in-car use. For safety reasons, the product should only be installed in the car, even if the children are not sitting the safety seat.

11. All baggage and items susceptible to injury in a collision shall be properly placed so that they do not cause injury to the child at the time of the collision.

12. The instructions of this product can be kept in the child safety seat during the use.

13. The child shall be removed from the safety seat before adjusting any movable or adjustable portion of the child safety seat (except for the headrest adjustment).

14. During the daily use of the vehicle, ensure that all components of the child safety seat are fixed in the correct position and are not stuck to the active seat or door.

15. Warning: DO NOT use any other force points other than those marked on the child restraint system, please contact the manufacturer if in doubt. DO NOT buy second-hand child safety seats, because you can not know the history of used products, most likely to have experienced an accident, or key parts may have been missing.

16. Please ensure that any lap strap is worn low down so that the pelvis is firmly engaged.

17. The Child Restraint System shall not be used without the cover.

18. The Child Restraint System cover shall not be replaced with any other than the one recommended by the manufacturer.

GB

ES

FR

DE

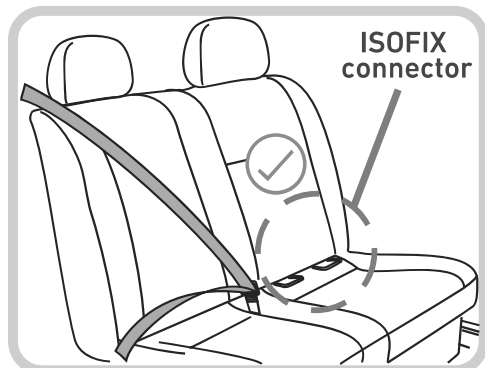
IT

PT

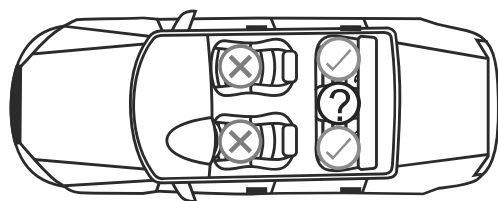
NL

# OPERATIONS

## 4.1 The Mounting Position



This child safety seat is available with a 3-Point Safety-Belts that approved to UN/ECE Regulation No.16 or other equivalent standards. Not suitable for models with only 2-Point Safety-Belts. Note: it is recommended that the ISOFIX chuck of the child seat be locked on the ISOFIX connector of the car when installing the child seat. It can improve seat safety and comfort.



Available Position

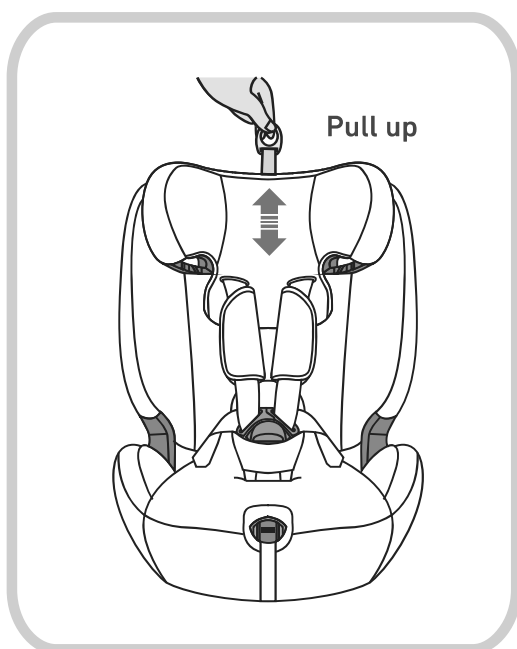


Unavailable Position



Only Available if ISOFIX Anchorage is Equipped

## 4.2 Adjust The Headrest



According to the height of the child, the headrest has 13 positions could be adjusted. As shown on the left, adjust the headrest to the appropriate height by the headrest-lever up and down.

**Important:** After loosening the headrest, check that the headrest is locked in a safety and suitable position by pulling up or down the headrest.



# OPERATIONS

GB

ES

FR

DE

IT

PT

NL

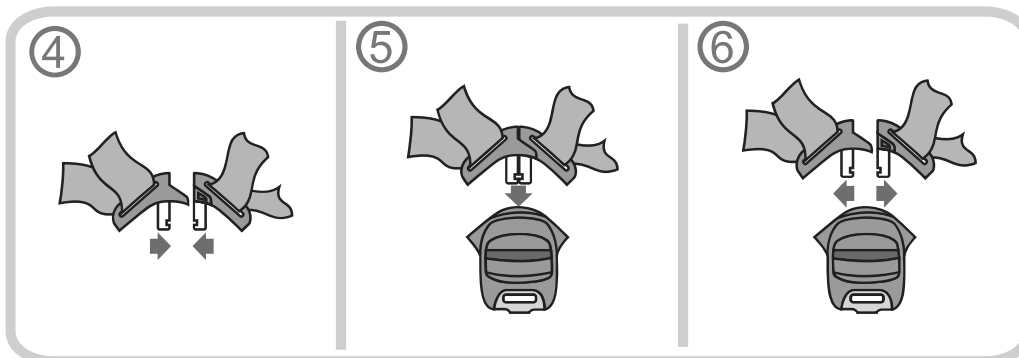
## 4.3 Check The Height Of The Shoulder Straps



Check that the shoulder strap height is suitable for your child: straps should pass through straps that are equal to the child's shoulder or slightly higher than the child's shoulder position as shown in above, fig.③

The height of the shoulder strap of this product can be adjusted up and down with the headrest. When using, adjust the height of the headrest to adjust the suitable shoulder strap height.

## 4.4 Buckle Operation



Step 1: Pull the left and right buckle tongue together.fig.④

Step 2: Insert the closed-insert into the slot at the same time. If you hear the "click" sound, it means that the buckle is locked. Pull the insert up and check if the buckle is locked properly.fig.⑤

Step 3: To unfasten the buckle, press the red button down and the insert will pop up automatically.fig.⑥

## 4.5 Adjust The Length Of The Shoulder Straps

### 1. Tighten the straps:

Pull the straps outward until the straps are completely tightened. Tighten the straps as much as possible without causing discomfort to the child. The crotch strap is as low as possible and should be located near the crotch rather than the abdomen. Loose straps are dangerous. Every time the child is placed in the child seat, check that the seat belt adjuster is fully functional, and then pull the straps, tighten the straps, and do not twist the straps. (Fig.⑧ next page)

### 2. Loosen the straps:

The shoulder strap can be loosened by pressing the seat belt adjuster (hidden under the adjustor).

# OPERATIONS

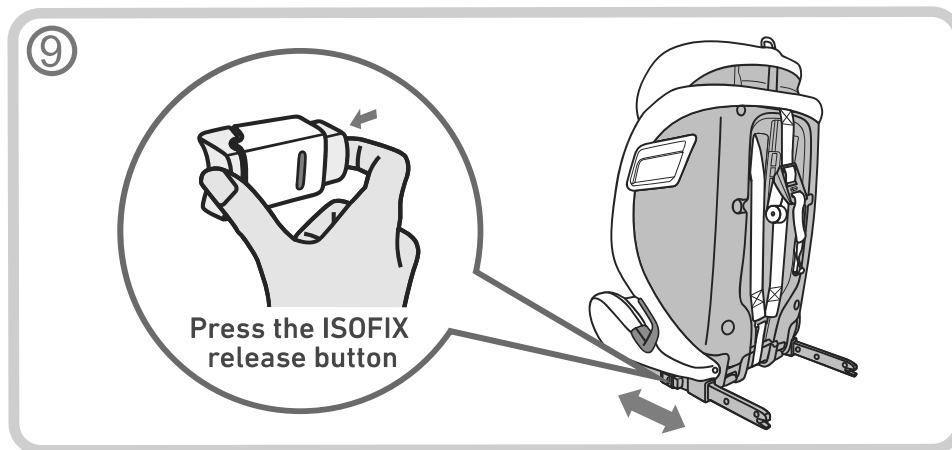
Action: Press the seat belt adjuster down while the other hand holds two straps to the front of the child to loosen the straps. (Fig. ⑧ below)



## 4.6 Adjust The ISOFIX

As shown below, press the ISOFIX release button and pull the ISOFIX chuck out to the outermost so that the ISOFIX chuck can be installed.

If you want to retract the ISOFIX chuck, push the chuck back by pressing the ISOFIX release button inward.

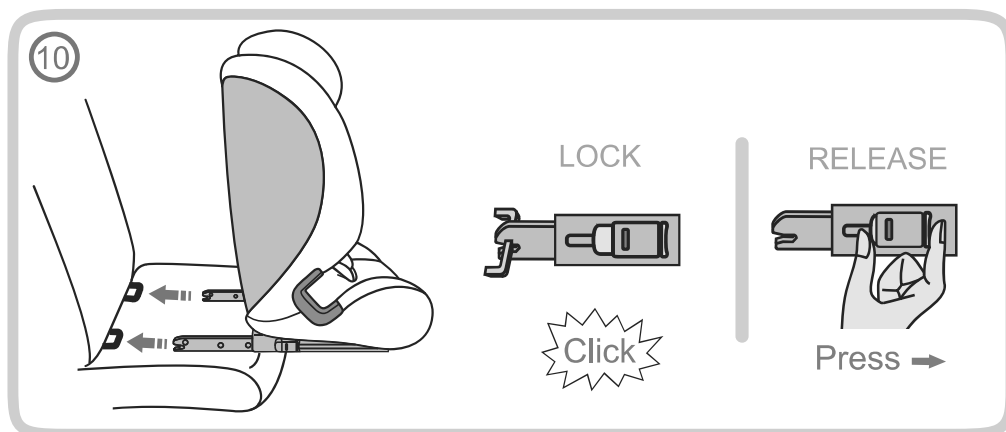


## 4.7 Install The Child Safety Seat

Step 1: Pull the ISOFIX chuck to the outermost end, then insert the ISOFIX interface on the car. When you hear "click" to indicate that the ISOFIX chuck and the ISOFIX interface are fully docked. Note: at this time, the ISOFIX Display Window appears GREEN.

Step 2: Push the child safety car seat tightly against the backrest of the car, until the two are perfectly tightly aligned. If you want to release the ISOFIX, you can unlock the ISOFIX by pressing the release button, as figure shown next page.

Step 3: Use a 3-Point Safety-Belts to install the child safety seat, see 5.2 for specific actions.



## INSTALLATION

### 5.1 For Height 76-105cm with ISOFIX and TopTether

#### 5.1 For Height 76-105cm with ISOFIX and TopTether

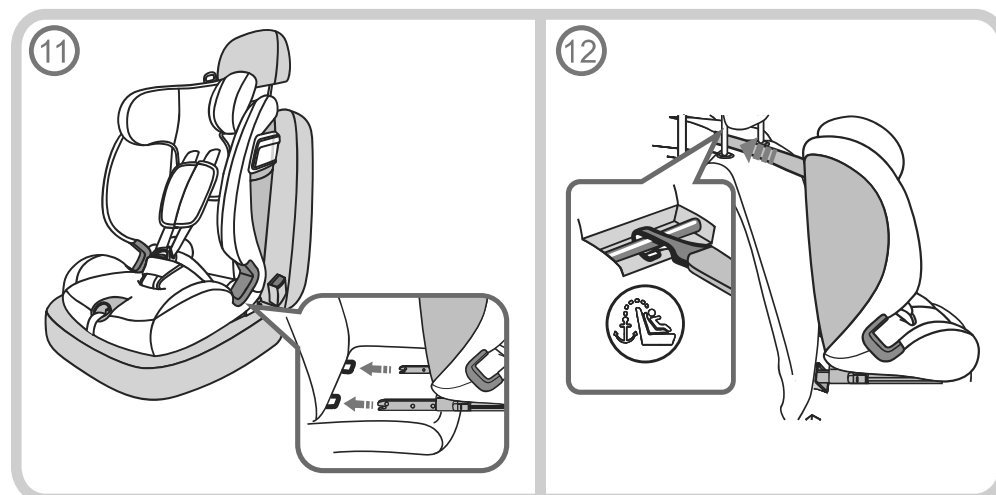
This product is suitable for children height 76-105cm, forward facing installation:

**Step 1:** Refer to 4.6 and 4.7, use ISOFIX to fix the child safety seat. Make sure the ISOFIX is tightly locked, and its both sides display window turn green. Then push the child safety seat to your car seat backrest until it is totally against your car seat backrest.

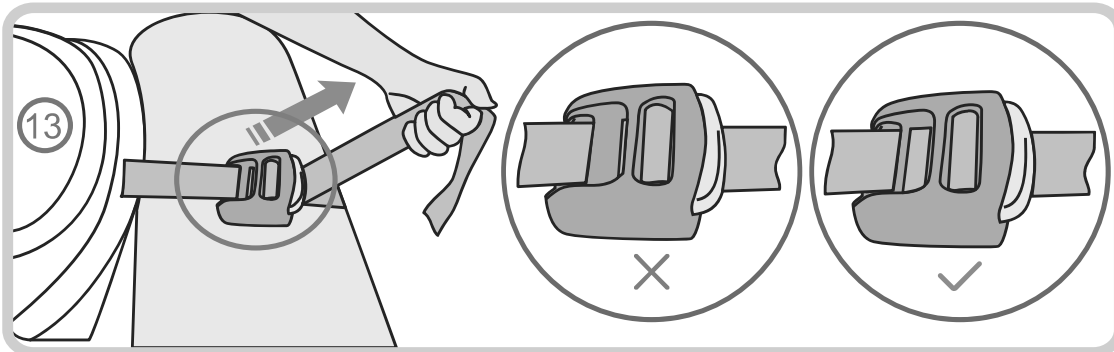
**Step 2:** Use top tether adjusting buckle to adjust the top tether to the suitable length. Then as below fig. ⑫, ⑬, hang the anchor to the attachment point on your car.

Pull it as tightly as possible. The top tether indicator will turn green until the belt is locked. **Step 3:** Place your child in the safety seat, check that the height of the shoulder straps and headrest is correct, then lock the buckle. All seat belts shall not be twisted.

Heading →



# INSTALLATION



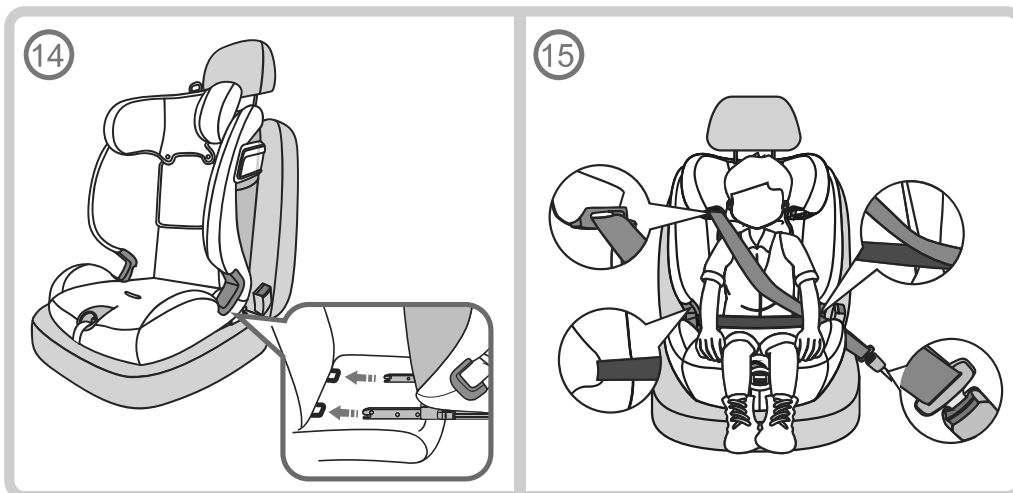
## 5.2 For Height 100-150cm

This product is suitable for children at 100-150cm height with forward installation. Installation method 1: Refer to 5.3: Removal of the seat belt and hide the buckle hide the buckle body in the hole on the base which is under the cover.

Step 1: Refer to 4.6,4.7, secure the child safety seat to the car seat with the ISOFIX attachments , make sure that the ISOFIX display window appears green, and then push the child safety seat to the back of the car seat slowly until it is fully fit . As shown in the fig. ⑭.

Step 2: put the child into the child safety seat, and secure the child and child safety seat to the car seat. In Fig ⑮. please adjust the carbelt as tightly as possible. Note: All seat belts shall not be twisted.

Heading →



Installation method 2:

Put the child safety seat on the car seat , and then slowly push the child safety seat to the back of the car seat until the safety fit, as shown in the picture ⑯. Put the child into the child safety seat and secure the child and child safety seat to the car seat with the car 3-point seat belt, as pictured ⑰. Note: All seat belts shall not be twisted.

# INSTALLATION

GB

ES

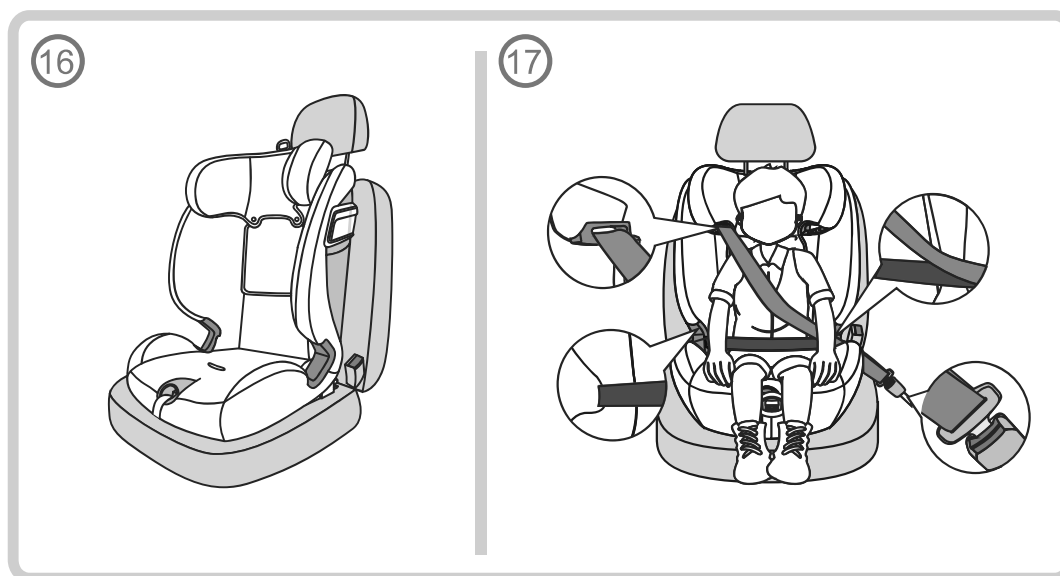
FR

DE

IT

PT

NL



## 5.3 Removal of the seat belt and hide the buckle

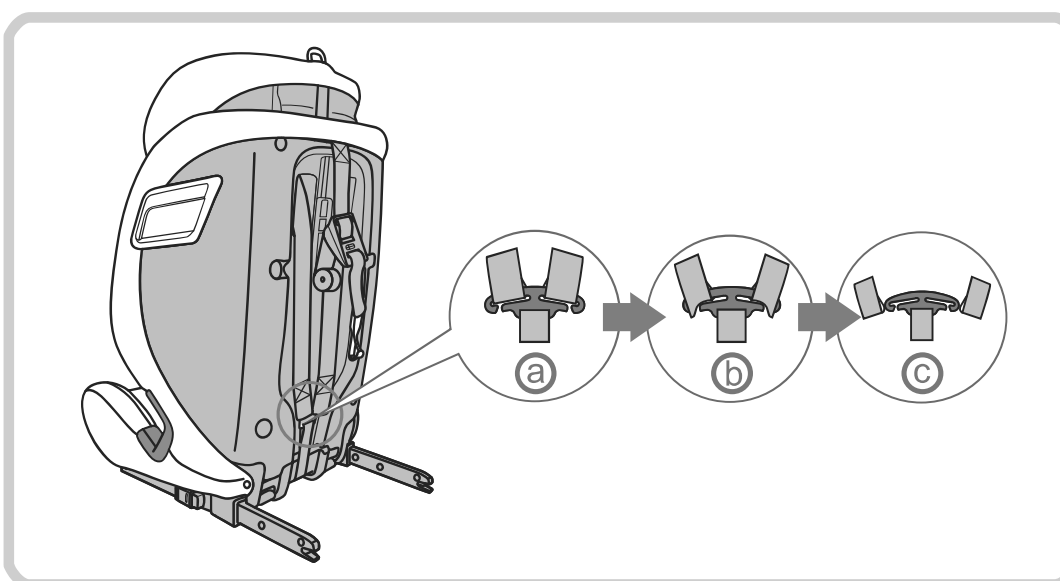
Step 1: Loosen the belt system. (Refer to 4.5)

Step 2: Pull the belt system out of their metal brackets on the back side of the child car seat, guide these through the child car seat to the front side. (Fig.a,b,c)

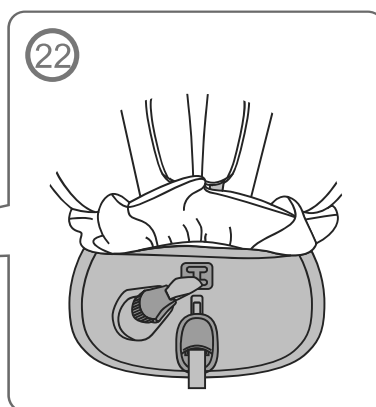
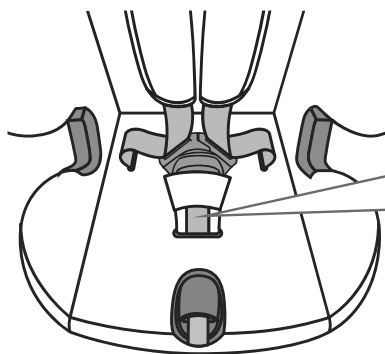
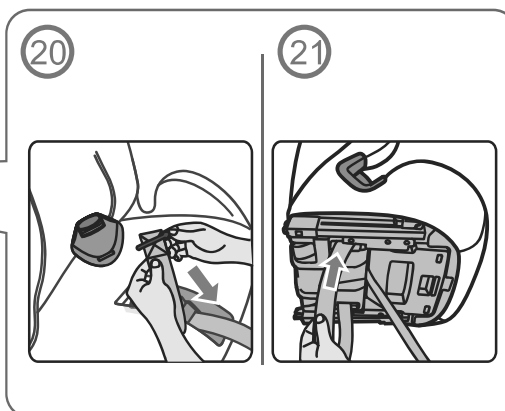
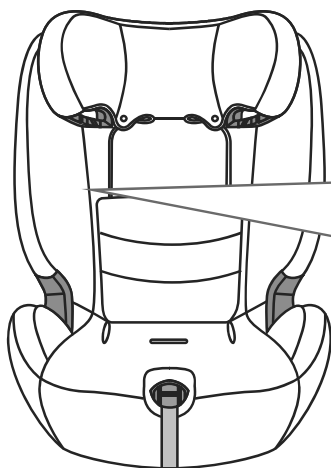
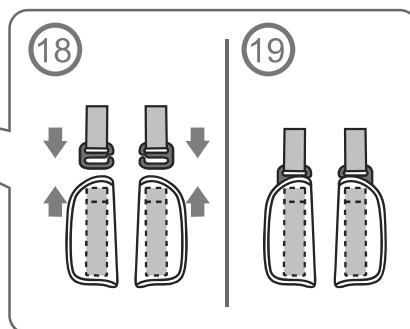
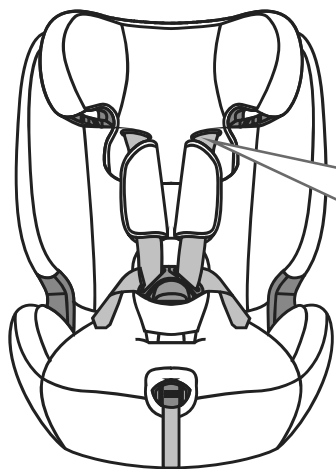
Step 3: Remove the shoulder pads. (Figure 18, 19)

Step 4: Separate the buckle tongues from the buckle, then lead straps through buckle tongues and pass both sides of straps through strap slot at the bottom of seat. (Figure 20, 21).

Step 5: Hide the buckle body in the hole on the base.(Figure 22)



# INSTALLATION



# REMOVAL AND INSTALLATION OF FABRIC COVER

GB

ES

FR

DE

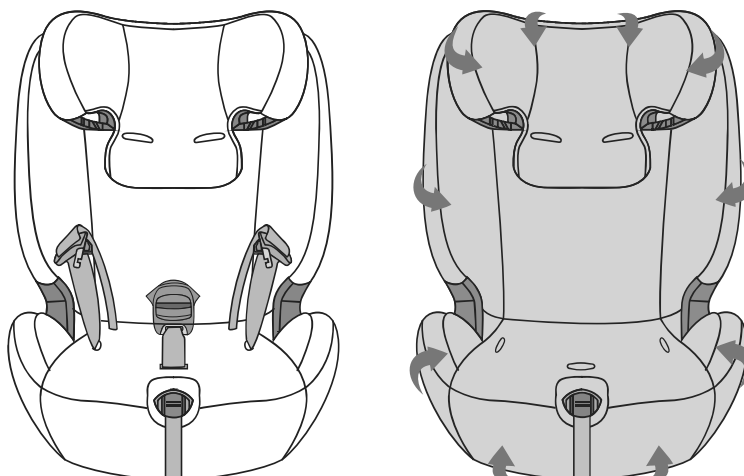
IT

PT

NL

1. See 5.3, Removal of the seat belt and hide the buckle
2. Then remove all the covers as below fig (23)
3. Note: If you need to install the cover again, please operate in reverse order of removal.

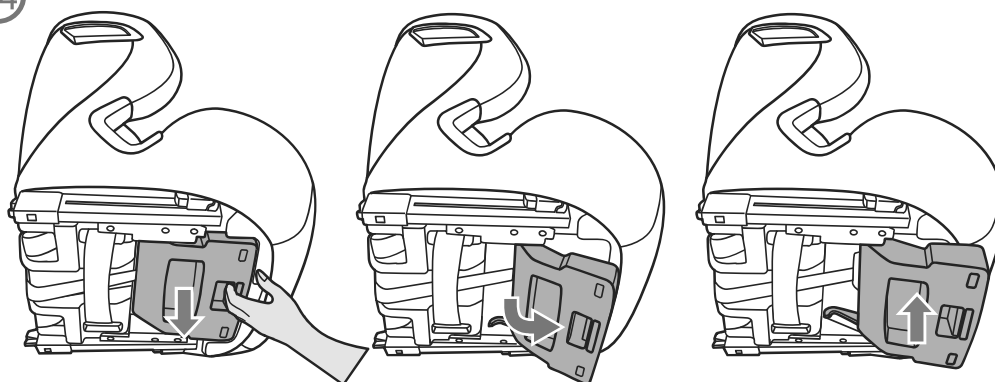
(23)



## TWO POSITIONS ADJUSTMENT MECHANISM

This car seat can be reclined to two different seating position by pulling adjusting board under seat base

(24)



# MAINTENANCE AND CLEANING

## 7.1 Routine Maintenance

1. During daily use, child safety seat's wear and tear should be checked regularly. In the event of an accident, the product needs to be replaced.
2. When not using the child safety seat, place it in a dry, ventilated place to avoid damp and mildew.
3. If dust is found on the surface of the child safety seat, dry the seat belt and plastic parts with a damp sponge and then dry by ventilation.
4. If you drop food or drink onto the seat belt, remove it and rinse it with warm water, then dry by ventilation.
5. If you want to clean the entire seat cover, please refer to 7.2.

## 7.2 Laundry Information

Solvents, chemical cleaners and lubricants are prohibited for any part of this product.



Hand washable, water temperature is less than 30 degrees.



Unbleached



Dry-cleanable, except for detergents containing trichloroethene.



No drying



No ironing